

Ferrolli



Low NOx gas water heater

Instantaneous / Open chamber and natural draught / Forced draught sealed chamber



GAS WATER HEATER

Effective / Easy / Beautiful and Smart

EFFECTIVE

The ECO range has been designed according to the strict efficiency parameters of the European ErP Directive. In practice, they can produce a lot of hot water at a low cost, while respecting the environment and with minimal polluting emissions. They can also be very easily integrated on a solar thermal system for maximum efficiency and comfort.

EASY

ECO water heaters are extremely simple to install and can be interchanged with previous series. Although they are very compact, they have been designed and built for the internal components to be easily accessed and for easy maintenance.

BEAUTIFUL AND SMART

The designers of the ECO project have created “friendly” aesthetics that can easily be integrated with the most diverse furnishing styles. The knob or button controls have been designed to be easy to use and understand. All Ferroli gas water heaters are fitted with a user interface display.

SKY ECO F

Gas water heater with sealed chamber, modulating heat power and electronic control of combustion. Emission of LOW NOx fumes **and SUN EASY system to be directly coupled to a solar thermal system.**



SKY ECO 11F

USEFUL POWER FROM 19.5 TO 5.5 kW
DHW PRODUCTION 11.2 l/min AT ΔT 25°C

SKY ECO 14F

USEFUL POWER FROM 24.2 TO 9.4 kW
DHW PRODUCTION 13.9 l/min AT ΔT 25°C

SKY ECO 17F

USEFUL POWER FROM 29.6 TO 11.5 kW
DHW PRODUCTION 17 l/min AT ΔT 25°C

SKY ECO C

Gas water heater with open chamber and natural draught, with modulating heat power. Emission of LOW NOx fumes **and SUN EASY system to be directly coupled to a solar thermal system.**



SKY ECO 11C

USEFUL POWER FROM 19.4 TO 7.2 kW
DHW PRODUCTION 11.5 l/min AT ΔT 25°C

SKY ECO 14C

USEFUL POWER FROM 24.1 TO 9 kW
DHW PRODUCTION 13.8 l/min AT ΔT 25°C

ZEFIRO ECO

Gas water heater with open chamber and natural draught, with adjustable heat power with fumes emission of **LOW NOx type**



ZEFIRO ECO 11

OPEN CHAMBER, NATURAL DRAUGHT,
POWER OUTPUT FROM 18.8 TO 7.1 kW
DHW FLOW RATE 11 l/min ΔT 25°C

ZEFIRO ECO 14

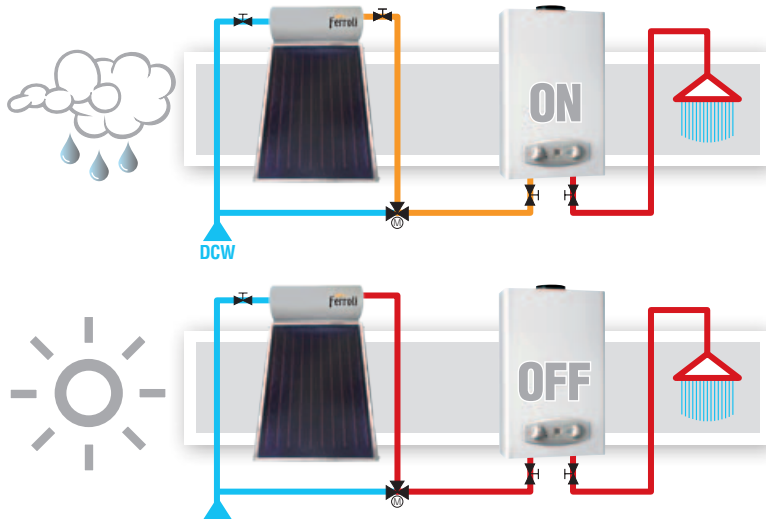
OPEN CHAMBER, NATURAL DRAUGHT,
POWER OUTPUT FROM 23.7 TO 9.5 kW
DHW FLOW RATE 13.9 l/min ΔT 25°C



SUN EASY

Easy... Economic... Ingenious

The SKY ECO range has been designed to be easily integrated with the solar thermal systems, with natural or forced circulation. The temperature of the water coming from the solar circuit is constantly monitored and the water heater burner is only switched on if it is not hot enough.



In case of insufficient irradiation and therefore the domestic hot water being modestly pre-heated, the water heater will contribute with the necessary heat to reach the required setpoint temperature.

If the sun and the solar system fulfil their "duty", no integration from the water heater will be necessary; the hot water will be conveyed to the tap, without additional devices being required, with the mixing of the thermostatic valves.

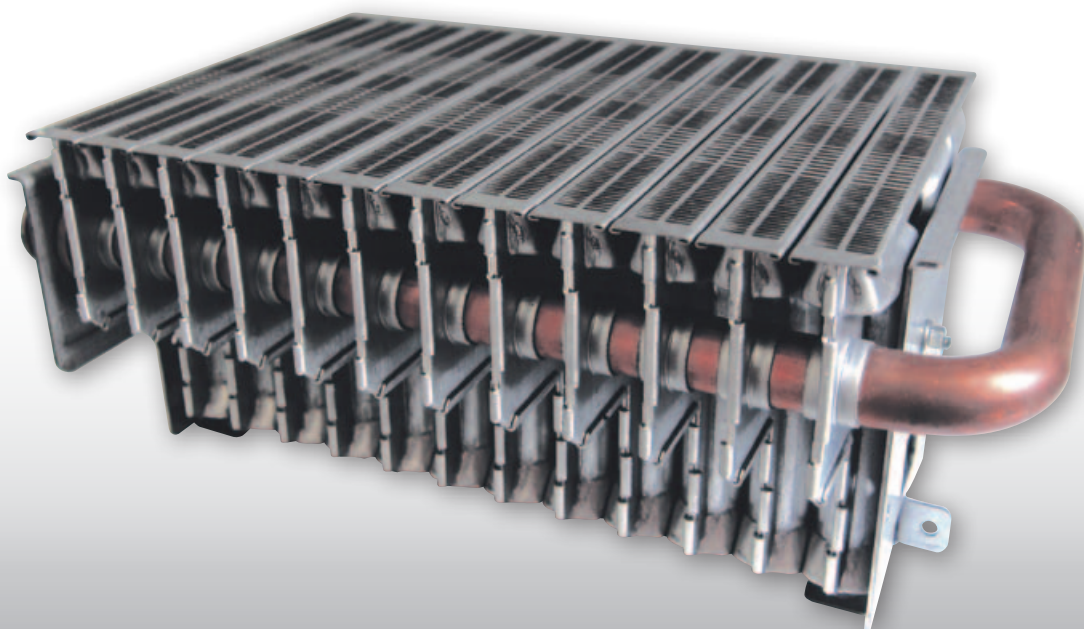
For the desired temperature to be reached, SUN EASY allows for significant savings even during the colder seasons, exploiting and integrating even the smallest solar contribution, which is otherwise lost.

THE CORE OF WATER HEATERS

All ECO series water heaters conform to the very strict restrictions on the emission of fumes into the atmosphere, imposed by European regulations.

The burners of the ECO range use special technology, which consists in maintaining the temperature of the flame very low and keeping cooled burner sections.

This method allows to go far below the limits imposed by the ErP directive, which sets the NOx limit at 56 mg/kWh.



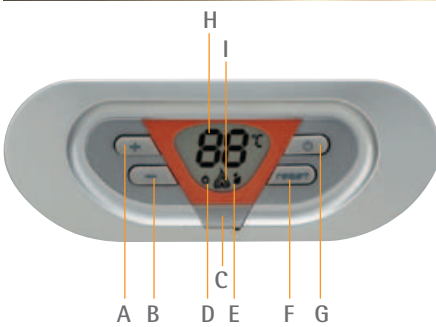
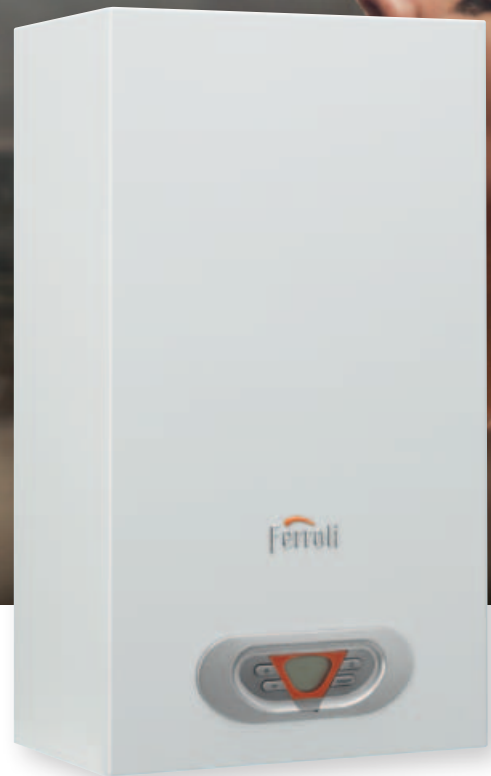
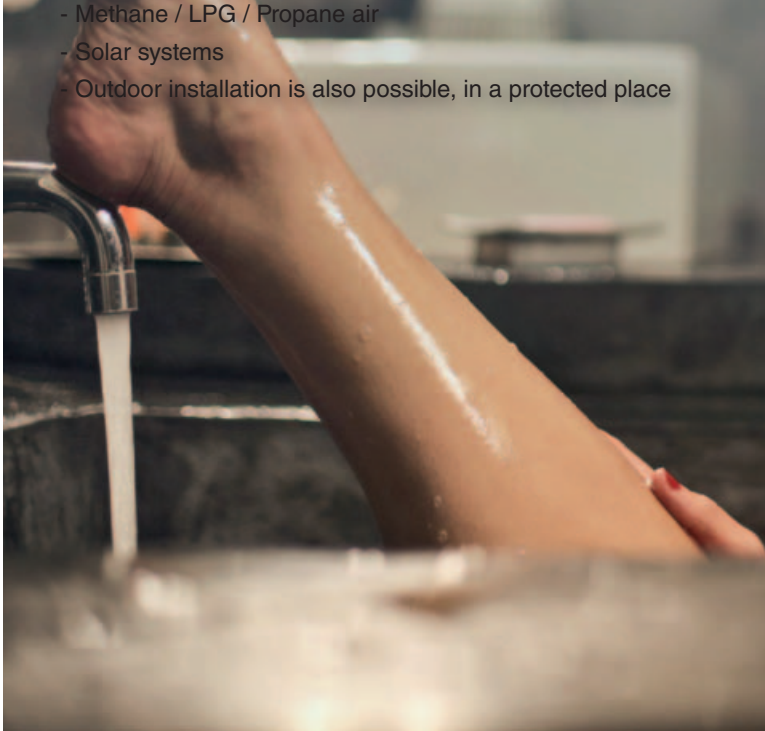


SKY ECO F



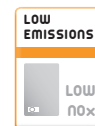
Gas wall-mounted water heater of LOW NOx type with forced draught and sealed chamber

- Copper heat exchanger
- Interface display
- Continuous power modulation
- Methane / LPG / Propane air
- Solar systems
- Outdoor installation is also possible, in a protected place



KEY

- A** Key to increase the domestic hot water temperature
- B** Key to decrease the domestic hot water temperature
- C** Service Tool connection
- D** OFF symbol
- E** DHW operation symbol
- F** Reset key
- G** Device on/off key
- H** Multifunction symbol
- I** Burner on symbol and current power level (Flashing during faulty combustion)



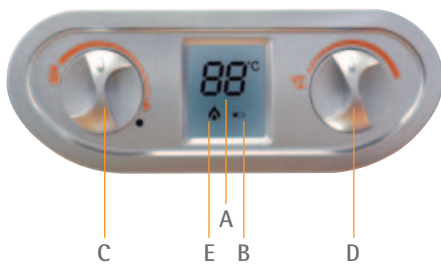
MODEL	ECO 11 F		ECO 14 F	ECO 17 F	
ERP Class	(Class G - A)				
Nominal heat flow rate	Max	kW	21.7	26.9	32.9
Thermal power	Max / Min	kW	19.5 / 5.5	24.2 / 9.37	29.6 / 11.47
Maximum operating pressure		bar	10	10	10
Maximum DHW production	Δt 25°C / Δt 30°C	l/min	11.2 / 9.3	13.9 / 11.6	17.0 / 14.2
Domestic hot water temperature regulation	Min / Max	°C	40 / 65	40 / 65	40 / 65
Weight when empty		Kg	14	15	18
Electric power supply		V/Hz	230 / 50	230 / 50	230 / 50
No. of pieces/pallet		no.	21	21	21

SKY ECO C



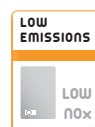
Gas wall-mounted water heater with natural draught and open chamber, of LOW NOx type




- Copper heat exchanger
- Interface display
- Power modulation
- Methane / LPG / Propane air
- Solar systems
- Battery power supply



KEY

- A** Display of domestic hot water temperature
- B** Battery level signal
- C** Burner power/off regulation
- D** Temperature regulation
- E** Burner on symbol



MODEL			ECO C 11	ECO C 14
ERP Class	 M	(Class G - A)		
Nominal heat flow rate	Max	kW	21.7	26.9
Thermal power	Max / Min	kW	19.4 / 7.2	24.1 / 9.0
Maximum operating pressure		bar	10	10
Domestic hot water production	Δt 25°C / Δt 30°C	l/min	11.2 / 9.3	13.8 / 11.5
Domestic hot water temperature regulation	Min / Max	°C	40 / 65	40 / 65
Weight when empty		Kg	11.5	13
Power supply			Batteries	Batteries
No. of pieces/pallet		no.	21	21

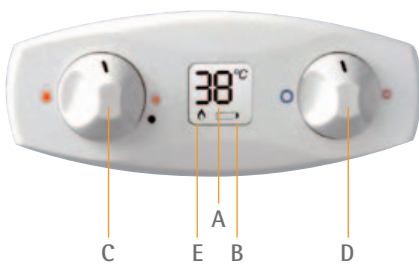


ERP

ZEFIRO ECO




Gas wall-mounted water heater with natural draught and open chamber, of LOW NOx type

- Copper heat exchanger
- Interface display
- Power modulation
- Methane / LPG / Propane air
- Solar systems
- Battery power supply

**KEY**

- A** Display of domestic hot water temperature
- B** Battery level signal
- C** Burner power/off regulation
- D** Temperature regulation
- E** Burner on symbol

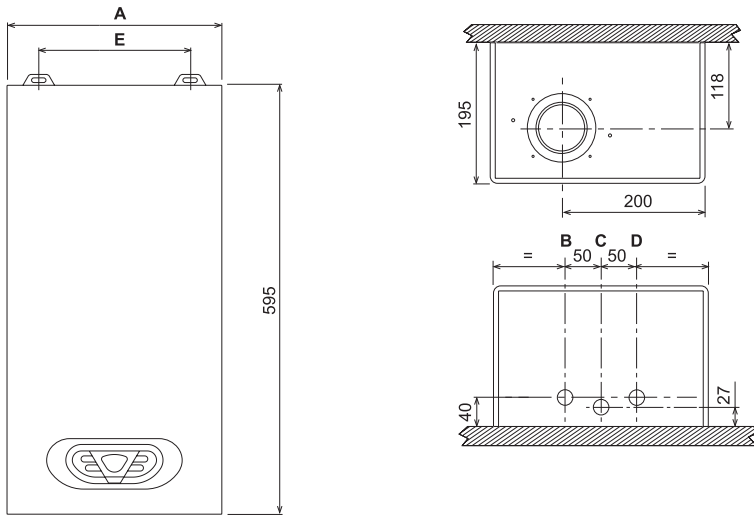


MODEL			ECO 11	ECO 14
ERP Class	 M	(Class G - A)	 A	 A
Nominal heat flow rate (P _n)		kW	21.1	26.8
Useful power	Min / Max	kW	7.1 / 18.8	9.5 / 23.7
Maximum operating pressure		bar	10	10
Domestic hot water production	Δt 25°C	l/min	11.0	13.9
	Δt 30°C	l/min	9.1	11.3
Domestic hot water temperature regulation	Min / Max	°C	40 / 65	40 / 65
Power supply			Battery	Battery
No. of pieces/pallet		no.	21	21



DIMENSIONAL DATA

Technical drawings

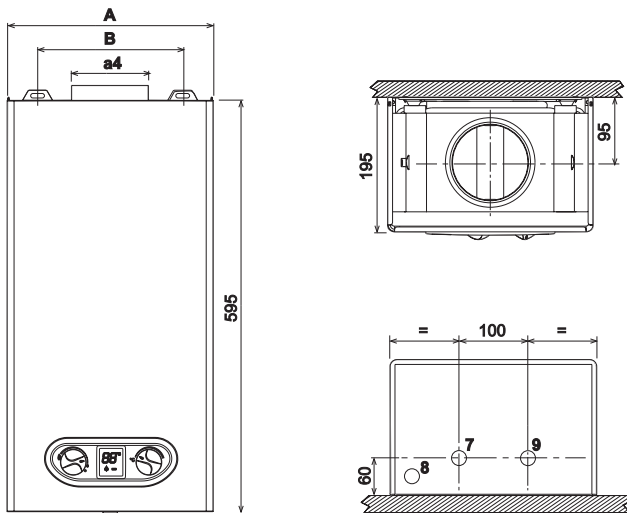


SKY ECO F

KEY

- B** DHW outlet Ø 1/2"
- C** Gas inlet Ø 3/4"
- D** DHW inlet Ø 1/2"

DIMENSIONS	ECO 11 F	ECO 14 F	ECO 17 F
A mm	295	335	375
E mm	210	250	290

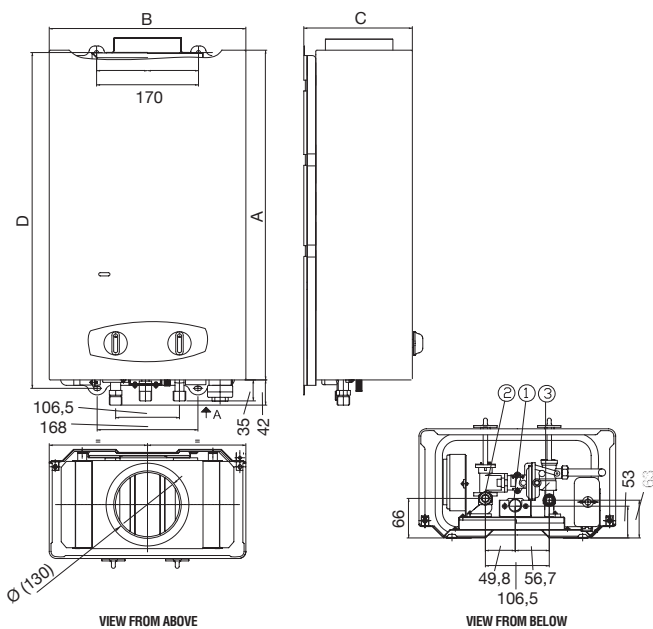


SKY ECO C

KEY

- 7** Gas inlet Ø 1/2"
- 8** Hot water outlet Ø 1/2"
- 9** Cold water inlet Ø 1/2"

DIMENSIONS	ECO C 11	ECO C 14
A mm	295	335
B mm	210	250
a4 Ø	110	130



ZEFIRO ECO

KEY

- 1** Hot water outlet 1/2"
- 2** Gas input 1/2"
- 3** Cold water inlet 1/2"

DIMENSIONS	ECO 11	ECO 14
A	550	650
B	328	400
C	181	181
D	560	660



NOTICE FOR SALES AGENTS:

In view to constantly improve its production range and customer satisfaction levels, the Company hereby specifies that aesthetic and/or dimensional features, specifications and accessories may be subject to changes.

Please place the utmost care to ensure all technical and/or sales documents (lists, catalogues, brochures, etc.) provided to the final Customer are updated according to the latest edition.

Ferrolì spa

37047 San Bonifacio (VR) Italy - Via Ritonda 78/A

tel. +39.045.6139411

fax +39.045.6100233

www.ferrolì.com

export@ferrolì.com